

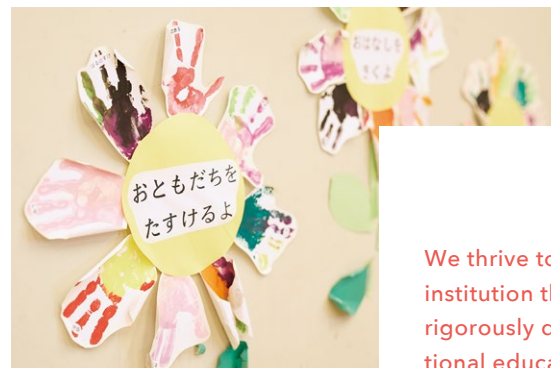


AOBA-JAPAN BILINGUAL PRESCHOOL



MISSION

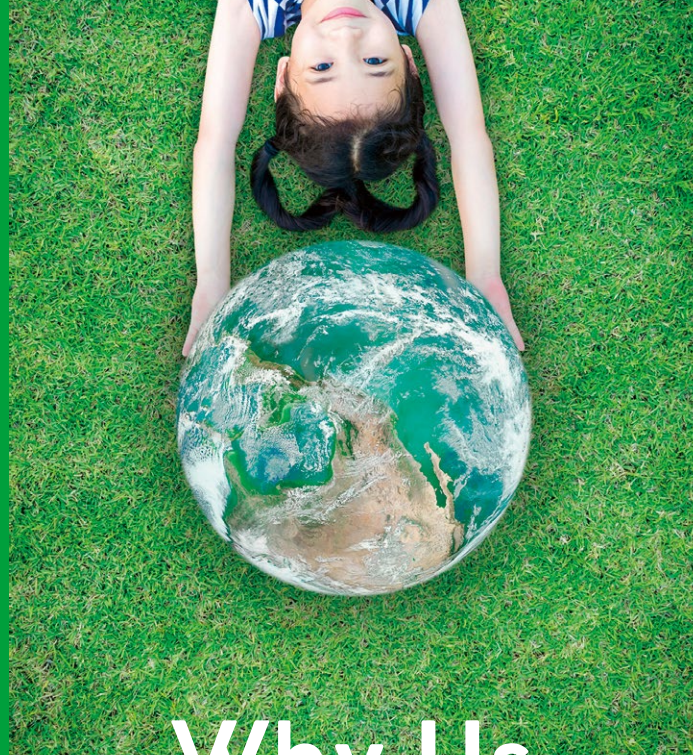
We believe in nurturing students who are globally-minded, compassionate, collaborative, deeply joyful in learning, risk-taking, and able to make a difference in the world.



VISION

We thrive to become a premier educational institution that provides students with a rigorously defined and structured international education in a safe and supportive learning environment. We support the learning needs of young students, welcome and respect their individual perspectives and nurture their values. We are committed to providing students with a wide range of learning opportunities to help them succeed in the future.





Why Us

Aoba-Japan Bilingual Preschool offers a unique program that teaches our children the skills most needed for the 21st century. The bilingual program, offered in both English and Japanese, focuses on holistic education, Inquiry-Based Learning, and helping each student fulfill their unique potentials. Our holistic program places a special emphasis on teaching our students the skills, values, and willingness to act in order to make a desirable contribution to society, without being biased toward subject-specific knowledge. Our holistic education is designed to nurture individuals with broad perspectives and a rich humanity through a variety of international perspectives, community involvement, and exposure to the arts, entertainment, and sports that can enrich life experiences. Inquiry-Based Learning is the opposite of the Memory-based learning that we are familiar with in Japan. In Memory-based learning, the one is judged based on how much he or she knows. However, in the 21st century, with the overwhelming increase in the amount of information available compared to that in the 20th century, how much one knows is no longer important. Inquiry-Based learning is based on the idea that it is only through the act of curiosity and in-depth exploration of events, rather than the memorization of large amounts of knowledge, that the concepts and knowledge gained can be applied to real world situations.

**Prepare Your Child with the Ability
to Thrive in a Global Society**



Introducing the IB Program

Cultivating an International Perspective Through Inquiry-Based Learning + Bilingual Education

Aoba-Japan Bilingual Preschool (A-JB) is a group school of the Aoba-Japan International School (Aoba Group), which has a history of over 45 years. The Aoba Group has implemented the IB curriculum, which is designed to help students develop international perspectives. It is based on the IB curriculum that our Inquiry-Based learning is taught, in a bilingual environment.

The International Baccalaureate (IB), an international educational program offered by the International Baccalaureate Organization (headquartered in Geneva), was established in 1968 as a comprehensive, challenging curriculum that prepares students to comprehend and cope with the complexities of the world, to equip them with the attitudes and skills to act responsibly in the future, and to provide them a qualification to enroll to an internationally recognized university and its route. It consists of four programs:

the Primary Education Programme (PYP), the Middle Years Programme (MYP), the Diploma Programme (DP), and the Career Related Programme (CP). At A-JB, we currently offer the PYP.

Inquiry-Based Learning, a key component of IB, encourages students to think and act on their own curiosity, making it different from the traditional knowledge-based education. Furthermore, IB education encourages the development of international perspectives by using multiple languages. This is based on IB's belief that communicating and learning in more than one language cultivates understanding and respect for other cultures. Through the Primary Years Programme (PYP), A-JB students will study the six subjects of language, social studies, mathematics, arts, science, and physical education (physical, personality, and social development) in an interdisciplinary, bilingual environment.

The IB Learner Profile

We believe that 10 images of the IB learner profile will support the students to become stronger, more sophisticated, and more developed, leading to the realization of a better and more peaceful world as they grow.



**Think and Act Based on One's Own Judgment
to Breed an International Perspective**



AOBA × IB PYP

INQUIRY-BASED APPROACH

INQUIRY-BASED APPROACH

PRIMARY YEARS PROGRAMME

Aimed to foster passionate life-long learners, this approach allows students to gain the sense of accomplishment through the process of formulating questions, expanding ideas and sharing them with their peers.

From the six universal themes defined by the International Baccalaureate, teachers choose four themes to explore during the year. We plan for more specific learning in a way that is developmentally appropriate and more interesting to our students. We value children's curiosity such as "Why?", "How does it work?", and repeat the cycle of "Inquiry," "Action," and "Reflection" with their classmates. Through this process, students learn how to think deeply about the subject that interest them, how to communicate their thoughts and feelings effectively, how to solve problems, how to build relationships with each other, and how to cooperate with each other.

BILINGUAL PROGRAM

BILINGUAL PROGRAM

English proficiency is essential for global citizens, with the respect to one's mother language, culture and customs as it is the foundation of one's self-identity.

Why Bilingual?
In the International Baccalaureate, one of the requirements for being internationally-minded is to be able to speak multiple languages. In addition, we believe that growing into a global citizen begins with learning languages, cultures, and customs, all of which help form the basis of one's identity. It is very important to be able to think and express oneself in one's mother language in a way that is appropriate for one's growth, and not neglecting the wonderful aspects of Japanese culture and customs. We believe that English language is an additional communication tool and aim to help students acquire the language as a global citizen.

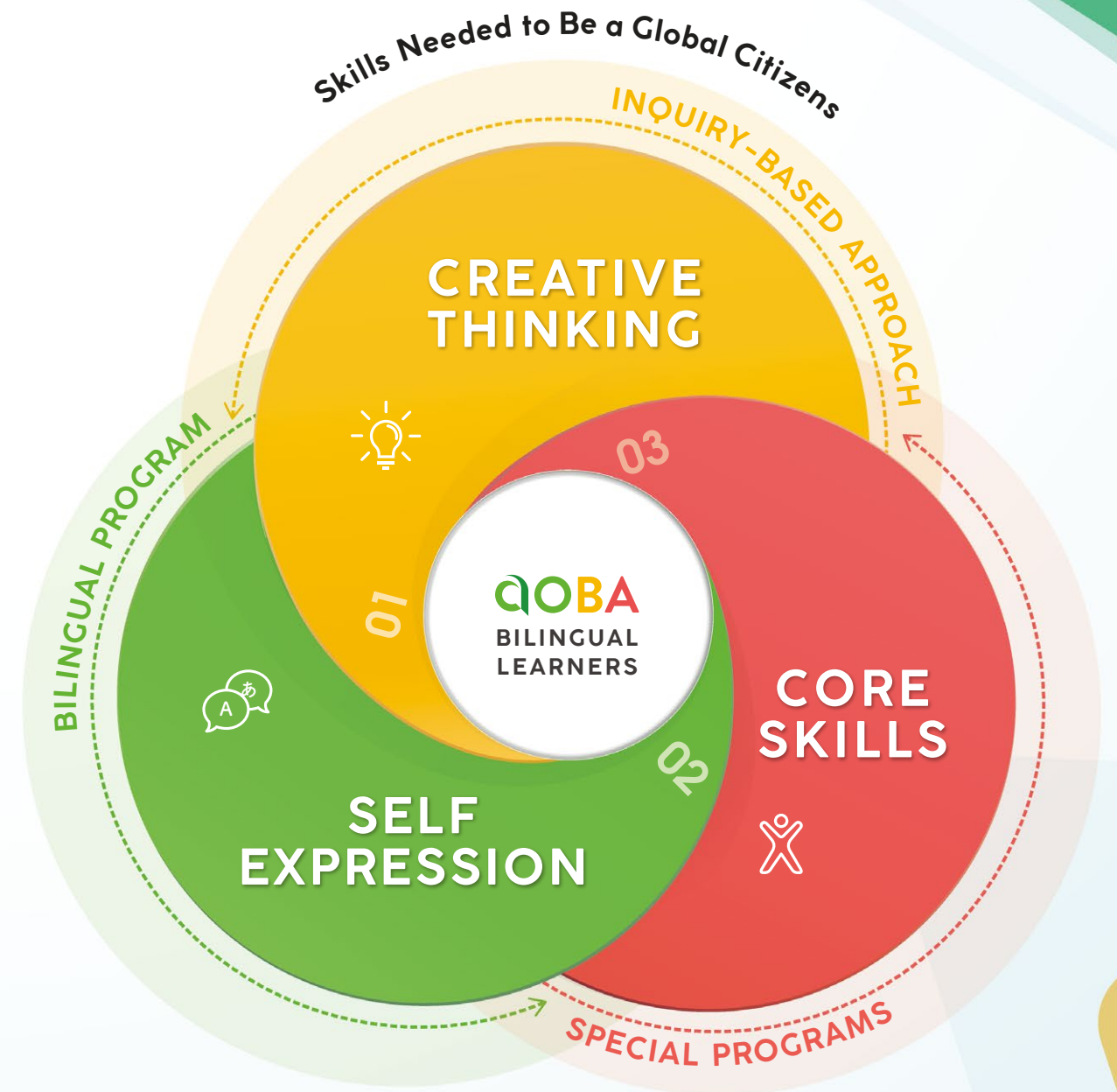
SPECIAL PROGRAMS

SPECIAL PROGRAMS

To support physical development and emotional enrichment, various programs are offered to develop unlimited potentials.

We offer a variety of programs to help our students grow both emotionally and physically, including arts and craft, music/Rhythmic, dance, physical education, and swimming. We believe that the best way to develop a child's potential is for them to experience the world firsthand. If your family is a working family and don't have the time to take your child to after-school lessons, you can count on us to provide your child with the experiences that he or she needs. By experiencing a variety of programs without the need to travel, students are encouraged to engage with their individual curiosity and ambition.

Cultivating the Ability to Become a Global Citizen



CREATIVE THINKING

Through daily activities such as creative arts, Learning Center (science, puzzles, and Drama play), and group work, we actively provide opportunities for the children of the 21st century - who live in a world where they need to look for answers to their questions - to think and make decisions for themselves. The habit of formulating questions on their own and exploring them deeply is the foundation for a lifelong learning.

SELF EXPRESSION

Our curriculum provides students with many opportunities to cultivate self-expression skills that encourage them to communicate their thoughts, feelings, and works of art in both Japanese and English. Our curriculum also provides opportunities for students to develop presentation and self-expression skills, both of which are key factor skills for future global citizens.

CORE SKILLS

In the early years of childhood, children develop their intellect, mind, and motor skills in accordance with their developmental stages. The basic skills developed through physical education, swimming, and music classes are transferable and can be later applied to help the child think and express himself or herself. Through exposure to the arts and sports, students will develop a rich sense of humanity.



INQUIRY-BASED APPROACH

PRIMARY YEARS PROGRAMME

All our campuses have adopted the International Baccalaureate (IB) Primary Years Programme (PYP), a global standard curriculum. We encourage our students to think, explore, and discuss. In principle, we do not use textbooks, but instead provide a learner-centered education in which children formulate their own questions, explore, ask questions, and then use these questions as the basis for in-depth research and understanding. All campuses offer bilingual PYP in Japanese and English.

IB Program Six Transdisciplinary Themes

To cultivate a global perspective and learn from an international point of view, students will not study vertically in each subject area, but will engage in Inquiry-Based Learning based on IB Program's Six Transdisciplinary Themes. Students will be able to experience the connections and complexities between themselves and the world around them, without being constrained by a predetermined framework.

Who we are	Where we are in place and time	How we express ourselves
How the world works	How we organize ourselves	Sharing the planet

Feeling the Power of Thinking and the Joy of Learning

INQUIRY-BASED APPROACH
PRIMARY YEARS PROGRAMME

Develop the Child's Ability to Work Spontaneously and Express Themselves

Inquiry-Based Learning - How its built...
Theme: Sharing the Planet

1 Tuning in

Through picture books, videos and games, students learned about the Earth, its beauty and discussed in class what humans must do to protect it. Students were able to discuss how our actions affect other living things and places in relation to litter and recycling.



The students commented such as "Turtles would suffer if they ate the garbage.", "The water would be dirty, and the fish would die."



Students made artworks showing the actions that should be taken by human beings to protect the earth(e.g.Reduce, reuse, recycling).



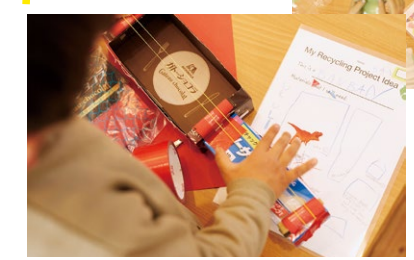
CENTRAL IDEA

Our choices affect the environment.

The ultimate goal of any topic is for participating students to understand the central idea, develop their own ideas and opinions about what they understand, and be able to communicate them to others in their own words.

3 Digging deeper

Students took the design drawings and material notes home and worked with their families to collect everything they needed.



Students took the initiative to create their own products while carefully checking their design drawings. The finished products were highly individualistic and rich in each student's thoughts and feelings.

2 Engaging in information

Students worked with their families to identify recycling symbols in their neighborhoods and considered how to contribute to reuse and recycle.



The "Recycling Project" started when our students realized that they could make their own toys using items that are usually disposed of as garbage at home. The students designed their own items based on what they wanted to make and with the materials that they wanted to use.



Taking action

Students shared their creations and the thoughts that went into creating them with their friends and teachers in a Show & Tell.

4





BILINGUAL PROGRAM

It is believed that 80% of the human brain is formed by the age of 3 and 90% by the age of 6. At A-JB, students are exposed to both English and Japanese during this critical period. In addition to acquiring appropriate Japanese, students also acquire English language skills and cross-cultural understanding through daily routines with a native English teacher. Such exposure to English is crucial, especially during their early years, as they have excellent language absorption skills. Through language education and activities, students are exposed to the culture and customs of various countries, which we hope can be the first step in helping our students develop an international perspective.

The Meaning of Exposure to English in Early Childhood

- 1** Critical time for children to acquire English at an early age. Develop listening and pronunciation.
- 2** Ability to interact and speak confidently with foreign nationals
- 3** Development of interest in foreign cultures
- 4** Ability to learn quickly
- 5** Can be learned in conjunction with Japanese

Speak with Anyone, Anywhere in the World
Bilingualism with A-JB

BILINGUAL PROGRAM

The library, which is one of the criteria for becoming an officially accredited IB school, is equipped with a wide range of selected books to support students' learning, including picture books and illustrated books in Japanese and English.



Library at A-JB Mitaka Campus



Library at A-JB Nakano Campus

Age-Appropriate Programs

- | | |
|---|---|
| For students
1-2
years old | English exposure to strengthen listening skills
Singing, playing and speaking
Learning English alongside Japanese |
| For students
3-5
years old | Higher ratio of English exposure
English immersion time
Daily school life / routines in English |



Immersion Program

The ratio of English to Japanese is approximately 50:50 for students 1-2 years old. English is used 60% of the time for students 3 years old and above. We provide bilingual education to ensure effective language acquisition through an immersive environment. In addition to the ability to listen, speak, read, and write in English from an early age, the elimination of psychological barriers against foreign languages and foreign nationals naturally deepens the student's global perspectives and interest in and understanding of other cultures.

Immersion education, as the term "immersion" implies, is the practice of teaching English through immersion in the language as a means of learning, rather than by treating the language as a subject.

Not just to learn English,
but to develop human
skills through English in daily life.



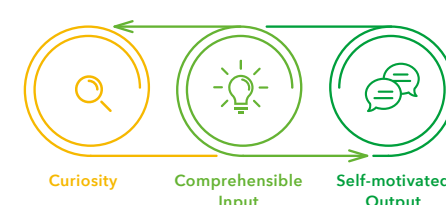
World-class language program adopted in addition to the IB curriculum



Jolly Phonics

Synthetic phonics, a method used in schools in more than 100 countries around the world, is a natural way to learn English pronunciation, reading and writing through songs and body movements. The program was developed to stimulate children's interests and senses in multiple ways, and to build an important foundation for reading and writing English while having fun.

Three Key Factors



Language Proficiency for Life



SPECIAL PROGRAMS



SPECIAL PROGRAMS

We offer a variety of programs that help children develop their unlimited potential. To encourage age-appropriate physical development and emotional enrichment, we offer a variety of programs such as physical education, arts and crafts, music/eurhythmics, and swimming during the regular school hours. Students can experience a wide variety of programs without having to travel, which encourages their individual curiosity and ambition.

*Programs offered vary by campus

Join Us for Emotional and Physically Stimulating Activities

MUSIC/EURHYTHMICS

P.E. (Physical Education)

DANCE

SWIMMING

ART & CRAFT

STEAM & PROGRAMMING

Lessons Are Conducted by Professional Instructors

For 1-5 y.o.



MUSIC/EURHYTHMICS

It is believed that infants and toddlers have a critical period of absolute pitch and rhythm, which they can learn from specialized teachers.

For 2-5 y.o.



P.E. (Physical Education)

Students develop a variety of motor skills such as running, jumping, mats, balance beam, jumping rope, balls and more, which will lead to improved physical fitness and self-confidence.

For 3-5 y.o.



DANCE

Through learning dance techniques, students can acquire a sense of rhythm, reflexology, and expression.

For 4-5 y.o.



SWIMMING

Through swimming, which one can enjoy throughout their entire life, students can improve their cardiopulmonary function and endurance.

For 1-5 y.o.



ART & CRAFT

Students learn tactile play and fine motor skills, by using a variety of tools freely to inspire students' creativities.

For 4-5 y.o.



STEAM & PROGRAMMING

In addition to STEAM programs*, which is often included in the International Baccalaureate curriculum, students learn the fundamentals of programming.

Unlock Your Child's Unlimited Potentials with A-JB's Programs

Physical Education Director



P.E. Coach Harumi Nakahashi

Championship in women's 61kg category in All Japan Selected Judo Weight Class (1996), silver medalist in World Student Judo Championship (1994), training partner of Ryoko Tani (Olympic gold medalist at Athens 2004). After working as a team coach for Kaoru Matsumoto (gold medalist at the 2012 London Olympics, bronze medalist at the Rio Olympics), Nakahashi is currently the physical education director at Aoba-Japan Bilingual Preschool.



*STEAM refers to Science, Technology, Engineering, Art, and Math.

DAILY LIFE

A day at A-JB



Outdoor Play

Outdoor time is held every day when the weather permits.



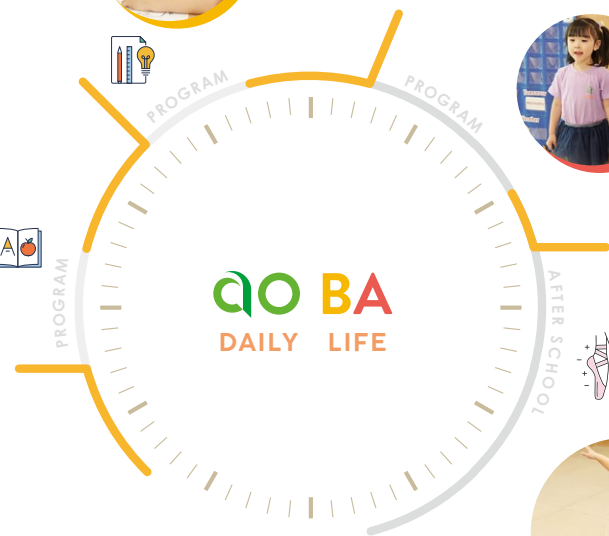
SAFE ENVIRONMENT

We provide domestically produced lunch and snacks that emphasize the taste of the ingredients. All our school buses are equipped with a GPS system, which allows parents to monitor the operation status in real time. For security reasons, the entrance is locked with a security system that prevents outsiders from entering the campus.



School Bus

School bus transportation is available for the students commuting to the school from afar.



Lunch & Snack

Nutritionally balanced meals & snacks
Experience and enjoy the taste of ingredients as they are



Reflection Time

Students reflect upon the day and get ready to go home



School Events

EVENT

Events to experience both foreign and Japanese cultures

We offer a variety of events that allow students to enjoy their school life, and for parents to be a part of their children's growth.



Parents shared their valuable experiences with us, including reasons for enrolling their children in A-JB, their children's progress and changes after joining us, and advice for parents who are considering enrolling their children in A-JB and A-JIS.

VOICE



I was able to see their proactive way of creating one idea after another that adults would never have thought of.

I was drawn to AOBA's style of education as it allows children to ask questions themselves, questions and explore freely, rather than cramming and so-called paper based learning, I felt that an environment where children can naturally learn social and emotional skills, in a free space without adults telling them what to do, is ideal for children in their early years when it is important to play to the fullest. I felt that the teachers do not interfere with the children, but rather watch over them and keep a reasonable distance which is in line with our thoughts as parents. We also have very good memories of the special events such as Book Day and the Winter Concert.

When we went to pick up our child every day, he was so happy dancing and did not want to leave or go home. Whenever something fun or new happened at home he would say "I'll tell the teacher tomorrow!" and look forward to going to school. With a twinkle in his eye he would talk about giving the acorns and pinecones he found at the park to his friends and I realized that his kindness and emotions were growing. I also realized that my son, who used to be shy and withdrawn, was able to speak

and express his feelings and thoughts during his time at A-JB. He has become an active child who enjoys communicating with many teachers and classmates and looking back I feel that this was a great benefit for him.

At A-JB, instead of an adult-initiated education, children play the leading role in everyday life, interacting with mysterious things while communicating with friends and learning society rules. It is up to the children to decide what kind of process and results they want to achieve.

"The world is up to us to make it fun, bright, and any way we want it to be!" I strongly believe that they are receiving this important message from daily school life. Also, as parents "The world can be fun and bright depending on ourselves!"

I would like to recommend A-JB to those who want to share with children fundamental things in their early childhood such as "What does it mean to live a quality life?" and "What are important values in one's life?"

Y.K.

Currently enrolled in A-JB K3
(enrolled in K2)

Our son found more and more love in English as his confidence grew. He has learned to communicate his own thoughts to others.



M.H.

Currently enrolled in A-JB K5
(enrolled in K2)

I wanted to expose my son to English from an early age, so he first attended ALA Saturday School. Although the program was different from the regular daycare program, my son enjoyed attending the school, and so I decided to enroll him in K2 as I was interested in A-JB's inquiry based learning program.

Every year the students have a Winter Concert and in K5 the children create their own stories, have discussions about the roles they will play and what lines they will say. By making their own decisions the children felt a sense of responsibility for their

roles and practiced a lot and I was impressed to see his growth when standing on the stage.

The small number of students at the Shibaura campus allowed teachers to give students comprehensive attentions and care. Each student's individual thoughts and feelings were respected which encouraged them to be mentally fulfilled, confident and ambitious. My son was not confident with English and was wary at first but they taught him at his own pace and as his vocabulary increased he became more enthusiastic to continue learning English. On the physical side, in addition to the daily outdoor play at the park, swimming, P.E., and karate were taught by professional instructors. My son was able to improve his athletic ability through these activities while still being based on the International Baccalaureate (IB) curriculum. PYP is taught in a bilingual environment and learning is based on the International Baccalaureate (IB) curriculum, with "all-round education" and "inquiry-based learning" as the pillars. The school also offers events that are linked to learning, such as outings to the suburbs, and sometimes pajama parties for children. The program is designed to help students learn and reflect through experience, rather than just sitting at a desk. I believe that the children acquired not only presentation skills but also the ability to speak up and express their own thoughts through activities such as show and tell and gain wisdom by listening to my friends' stories and understanding diversity. I believe that my son was able to spend his precious childhood in this way, and that it has given him a foundation for life and I am very grateful to the teachers.

It is impressive to see our daughter having fun to grow and gain understanding through the inquiry themes of IB.

I believe that the IB (International Baccalaureate) program offers effective tools to survive in this unanswerable 21st century. However, if you are looking for a full-fledged IB program, it is still limited to international schools. I was concerned about whether my child, born as a Japanese child, would be able to form a Japanese identity and whether she would lose her roots. However, at A-JB Japanese and English are taught at about the same frequency, and both Japanese and foreign cultures are actively incorporated into the events. I admired the good balance between Japanese and foreign cultures and decided to enroll.

I have two fond memories of A-JB. The first is that many of the teachers have other specialties other than being "teachers". such as yoga teachers, artists, nurses, etc. I was in awe one day when my daughter came home having learned essential things such as how to express her drawings and also how to use her muscles. The second was the way my daughter grew through the theme of exploration that she undertook every three or four months. In the theme "Where we are in place and time", she enjoyed exchanging letters with students from distant campuses and wondered how the world was connected. In the theme "How the world works" children learnt the importance of water when one day, after their morning walk outside, the water had stopped running at the school. (in fact, the teacher had turned off the tap). Both are good memories unique to A-JB.



R.S.

Currently enrolled in A-JB K4
(enrolled in K3)

If you are looking for an inquiry-based education or if you want to improve your child's English listening skills in their early childhood, if you are hesitant about an English-only international school, please visit A-JB and see for yourself. I recommend that you take a tour of A-JB and not only see the website or attend the school's information sessions, but talk to the teachers to learn about the school. I believe that by visiting A-JB, you will be able to see that the school's philosophy and educational policy are properly incorporated and put into practice.

It became natural for our daughter to accept different opinions and respect others.

When my child turned one year old, I was thinking about returning to work and also thinking about the environment in which my child would spend his/her precious childhood.

I came across A-JB and the deciding factors in my decision to enroll were that it was a "bilingual school" where my child could be exposed to both Japanese and English, and that it incorporated "inquiry based learning". The opportunity to be exposed to English on a daily basis from K1, when students are learning more and more words, is of course an important factor in learning English. I felt that the school environment, with both Japanese and English homeroom teachers, was favorable to the students because it allows them to think without creating language barriers. The "inquiry-based learning" was new and interesting to me as I grew up with the so-called Japanese education (memory-based learning). The A-JB IB-based curriculum allows children to explore and enjoy what they are interested in at an early age, when their curiosity is high and they can absorb a lot of information. I decided to enroll my children in A-JB in the hope that they would learn the joy of exploring their interests. The school organizes a variety of events, each of which is a good memory.

I remember the Show and Tell from K3 as a good memory for both parents and children. At first, my child was reluctant to give a presentation because she could not get used to it, but by graduation she loved doing Show and Tell and learned new things by listening to other friends' presentations. I think A-JB

life was a very good experience and she enjoyed listening to her friends' presentations, discovering new things, and sharing what she wanted to say.

My eldest daughter has now graduated from A-JB and is attending a Japanese public school. However, since she enjoyed learning English at an early age, her interest in English has not waned and she continues to take online lessons and take the Eiken test as one of her favorite subjects. The K4 and K5 PYP curriculum provides students with the opportunity to identify issues within major themes and encourages students to use a variety of tools to do research and actually try them out. They also had a lot of experience in exchanging opinions with their friends, accepting different opinions and bringing them together as one. She was originally a shy child, however she was able to make the most of her experience at A-JB and even after entering elementary school, she continued to write and present her own opinions in class without hesitation. I did not notice this when she was still in school, but after listening to her talk about her relationships with her friends, I realized that she is very happy with herself and her friends. I feel that it is natural for her to have different opinions and respect differences. I am happy to see that this is something she has gained from her experience in PYP activities. We have been with A-JB for about 6 years and our children have never said that they do not want to go to school. A-JB is a place where children are given many opportunities to "play and learn together." We believe that any child can have a fun and fulfilling day at this school.

E.K.
Currently enrolled in A-JB K4
(enrolled in K1)

L.K.
A-JB graduate
(enrolled in K1)
Currently G1 in a public
elementary school

A-JB has both the educational level of a private preschool and the softness of a nursery school

Honestly, when Ryutaro chose a kindergarten, we did hesitate. Private kindergartens are too strict, and nursery schools are too loose, which are not what we want. A-JB provides us with a perfect solution. A-JB has both the educational level of a private preschool and the softness of a nursery school.

Secondly, A-JB is a bilingual preschool. Exposure to English in early childhood is very helpful for children's language learning.



R.O.
A-JB graduate
(enrolled in K3)
Currently enrolled in
A-JIS G1

K.O.
Currently enrolled in
A-JB K3
(enrolled in K2)

Thirdly, there are a variety of After school programs to choose from in A-JB's EC time, which not only allows children to experience different courses, but also reduces the burden of parents.

What impresses me the most may be the educational content of PYP. The educational content of PYP helps children open a window to the world, allowing them to learn about different countries, different cultures, and different lives. Ryutaro and Kanako also often took home some of their crafts, which showed their understanding of the learning at school. I think PYP's study will help to the formation of their future world outlook.

Ryutaro has been studying at A-JIS for 7 months, and he has fully adapted to the life of an elementary school.

In terms of learning, his spoken and written English has also made great leaps. At the same time, A-JIS attaches great importance to the study of Japanese. In P.E. classes, there are a variety of sports, and now Ryutaro has experienced gymnastics, football, baseball, swimming, and rope skipping, etc.

The campus life of A-JIS is very exciting, and some activities are often held, and Ryutaro also enjoys participating in it.

In fact, the reason why we choose A-JIS to study is very simple. It is because Ryutaro said that he likes A-JB, and he is very happy every day in A-JB. If learning is difficult, it is better to help children choose a way to learn in happiness.

Very pleased with the balanced ability of English and Japanese

We chose A-JB because we wanted a bilingual learning environment to match our bilingual family. Having two teachers, one specializing in English and one specializing in Japanese, really creates a great environment for Rei, and also for us parents who want to communicate well with the teachers.

Watching Rei enthusiastically dance and sing together with his classmates during the performances is always a joy to see.

Our message to parents considering A-JB is that we are very pleased with Rei's balanced ability of English and Japanese.

R.L.
Currently enrolled in A-JB K3
(enrolled in K1)





New

AOBA BRIDGE PROGRAM

The program was created for those families and children who wish to continue their international education after graduating from A-JB. We provide childcare and education in 100% English environment and enhance the "four fundamental skills" including not only listening and speaking skills but also reading and writing skills. The program helps to develop students' thinking skills (Creative Thinking), expressive skills (Self Expression), social and emotional well being (social skills and emotional development). Students acquire the ability to play an active role in the global society in various fields and cultivate the qualities of a global citizen.

*Only Nakano Campus and Mitaka Campus have introduced this course.

Strengthening the four fundamental skills



Listening



Speaking



Reading



Writing

Bridging the Continuum
of International Education

100% English environment
Nurture the qualities of a global citizen.



Students will work on developing the four skills of reading, writing, listening and speaking in preparation for entering an international school.



Main childcare hours are conducted in an 100% English environment. Thinking in English, Speaking in English. The environment is designed to cultivate the ability to think, speak and express oneself in English.



Special Programs

Promotes age-appropriate growth and development and nurtures an emotionally rich mind.

Aoba Bridge Program (ABP) -Nakano-



Core Program

International Baccalaureate (IB)

The IB is a world-standard program established in 1968.ABP offers the Primary Years Program (PYP) for ages 3-12.

ABP is an inquiry-based learning program in a 100% English language environment.

Implemented Campus

Nakano

From September 2023

Musashi International Course (MIC)



Core Program

Early Years Foundation Stage (EYFS)

Educational Standards for Compulsory Pre-School Children in the United Kingdom.100%

English-language preschool curriculum that combines play-based and academic courses.MIC is designed to prepare students for entry into MIST.

Implemented Campus

Mitaka

From September 2023

Special Program | Extended Childcare (with bilingual class students) | Certificate of meeting the Guidance and Supervision Standards for Unlicensed Childcare Facilities issued by the Tokyo Metropolitan Government

Two types of
international standards



After School Programs

An optional program offered during extended care hours for children 3 years old and up. We offer a wide variety of programs taught by professional instructors. The children do not have to deal with the stress of traveling to and from school and parents also have less burden of picking up and dropping off their children. The program has been well received by parents as a way for them to spend their weekends in a relaxed atmosphere.



Karate

Kyokushinkaikan

Students learn karate as a form of self-defense, also developing courtesy



No traveling stress for afterschool activities! Special Lessons Conducted by Professional Instructors During the Extended Childcare



Programming

Powered by STEMON



Familiarizing children with STEAM develops their curiosity. Blocks and programming materials are used to foster an interest in numbers and shapes.



Gymnastics (Little Athlete Club)



Students develop a variety of motor skills such as running, jumping, mats, balance beam, jumping rope, balls and more, which will lead to improved physical fitness and self-confidence.



Ballet

ballet

In addition to physical exercise, the program fosters etiquette, artistic perspectives, and the ability to express oneself.



Basic Exam Class for Elementary School Entry

Kogumakai



A basic exam class for elementary school entry, focusing on children to reach a natural understanding, and developing inspiration and thinking skills.

*Programs above are just examples. Please note that programs offered vary by campus.



ALA Saturday Program



AOBA Action Learning Academy (ALA) is a completely new style of an English learning program offering 40 lessons a year on Saturdays at each Aoba Group campus, where students enjoy learning English through action. Unlike cram schools, using mainly textbooks and pens, this program uses interactive displays and involves both mind and body movement, making it the most efficient and enjoyable way to acquire conversation skills in English and an international mindset.



You will be showered with English on Saturdays!

An interactive learning style, Learning English through action!



AOBA original teaching materials

AOBA original teaching materials developed by ALA teachers, designed for children who study English once a week, aiming not only to familiarize them with English but also to firmly develop all four language skills. We provide teaching materials and an environment where children can enjoy learning English, including the use of digital devices.



5 courses based on age and English level

Little Kinder	LK	Interactive English Nursery	Interactive English Level 1	Interactive English Level 2	Interactive English Level 3
Level: Beginner Age: 2-3 year olds		Level: Beginner Age: 3-4 year olds	Level: Beginner to Elementary Age: 4 year olds and above	Level: Elementary to Intermediate Age: up to Grade 3	Level: Upper-intermediate Age: up to Grade 3



For A-JB and non A-JB students, and graduates
*Ages are as of April 2nd of the school year.
*Programs may differ from each campus.

Please visit our website for ALA inquiries
<https://aoba-bilingual.jp/ala/>





Parents and children learning English together!

Mommy & Me

Regular parent-child trial program for children aged 1 to 2 years old. Children can participate with their mothers and fathers with peace of mind.

We provide a variety of fun exploratory activities to stimulate children's interests and curiosity in a 100% English environment.

For 1-2 year olds!
Parent-child trial program
in a 100% English environment.

Sample Schedule

Time	Activity
9:00-9:05	Morning greetings
9:05-9:20	Morning circle time
9:20-9:40	Activity
9:40-9:45	Closing circle time

*Schedules vary by campus



45 minutes of fun and excitement for all five senses!

Starting with morning circle time, we will sing, dance, play games, do crafts, and move around with lots of physical activity. This is a short program of 10 sessions* in a 100% English environment that will help children develop an interest in English.

MOMMY&Me

For non A-JB students
*Contents may differ from each campus.

Please visit our website
for Mommy&Me inquiries
<https://aoba-bilingual.jp/mommy-me/>



Take advantage of the holidays and experience inquiry-based learning!

Seasonal Program

The Seasonal Program is a short 1-2 week program held during the summer, winter, and spring breaks for both internal students and students from other schools.

Themes are based on the IB Primary Years Program (PYP), and students experience A-JB's inquiry-based learning and a variety of activities all in a 100% English environment.



Sample Schedule

Time	Activity
8:10-9:00	Learning centers
9:00-10:30	Park time&Snack Time
10:30-11:00	Opening circle time
11:00-12:00	Learning experience 1
12:00-13:00	Lunch time
13:00-13:45	Learning experience 2
13:45-14:00	Review of the day, show and tells
14:00-15:00	Snack time&Learning Center
15:00-15:45	Learning experience 3
16:00	End of the Day & Pick up

*Schedules vary by campus

Challenge yourself with English
in your daily life

During the Seasonal Program, you will be in a 100% English environment.

The basic concept of the Seasonal Program is to learn English in a fun environment. It is an enriching time for students to challenge themselves in all aspects of their daily lives.

SUMMER PROGRAM
Usually held in mid-August.



WINTER PROGRAM
Usually held in late December.



SPRING PROGRAM
Usually held in late March.



Seasonal Program

For both A-JB and non A-JB students
*Programs may differ from each campus.

Please visit our website
for Seasonal Program inquiries
<https://aoba-bilingual.jp/seasonalprogram/>





Together with parents and teachers,
we cultivate our children’s potential
and future possibilities.



Principal,
Aoba-Japan International School

Dr. Jake Madden

Born in Australia. After graduating with a degree in elementary education, he spent 20 years as a principal in seven schools across Australia. During the doctoral program, he studied teacher development and the relationship between teachers and leadership, among other things. He has authored six books and numerous articles. In recognition of his contributions, he was awarded a fellowship from the Australian Council of Educational Leaders. In December 2019, he was named one of the Top 100 Leaders in Education by the Global Forum for Education and Learning. In August 2023, he became Principal of Aoba-Japan International School.

At Aoba-Japan Bilingual Preschool(A-JB), we prioritize providing children with essential experiences for success in the 21st century. Our International Baccalaureate (IB) program develops your child's mind and independence, preparing them for the challenges of a rapidly changing world.

We offer a bilingual environment in Japanese and English, promoting inquiry-based learning and a comprehensive education. We aim to nurture your child's ability to actively participate in a global society with an international perspective. With the IB program, we equip your child with the skills and knowledge to thrive in a complex, interconnected world.

Also our educators are committed to providing your child with the best learning experience. They are knowledgeable, skilled, caring, and compassionate individuals who prioritize your child's well-being. They work tirelessly to create a warm atmosphere that ignites a love of learning and encourages exploration of interests and passions.

Join us at A-JB and give your child a world-class education and the support they need to succeed.



AOBA-JAPAN INTERNATIONAL SCHOOL

Aoba-Japan International School (A-JIS) was founded in 1976 in Aobadai, Meguro-ku, as a co-educational, non-religious international school. Currently, about 450 students from more than 40 countries and regions are studying together on Aoba's three campuses, Aobadai, Meguro-ku (ages 1.5-6 | K2-K5), Hikarigaoka, Nerima-ku (ages 3-15 | K3-K5, G1-G9), and Honkomagome, Bunkyo-ku (ages 15-18 | G10-G12). In addition to Japanese cultural education, in 2016 A-JIS received full accreditation as an International Baccalaureate (IB) PYP (preschool/elementary school), MYP (middle school), and DP (high school), becoming the fifth integrated school in Japan to become a member of the IB World Schools. Our graduates have gone on to attend universities around the world, including many in Japan.

AOBA-JAPAN INTERNATIONAL SCHOOL

Meguro Campus

Preschool

2-11-5 Aobadai, Meguro-ku,
Tokyo 153-0042, Japan
TEL: 03-4520-2313

Hikarigaoka Campus

Preschool / Elementary School /
Middle School

7-5-1 Hikarigaoka, Nerima-ku,
Tokyo 179-0072, Japan
TEL: 03-4578-8832

Bunkyo Campus

High School

6-18-23 Honkomagome Bunkyo-ku,
Tokyo 113-0021, Japan
TEL: 03-4560-3422



<https://www.japaninternationalschool.com/>



SUMMERHILL
INTERNATIONAL
SCHOOL



An international school with a history of more than 50 years in the Azabu area of Minato-ku, Tokyo. Summerhill International School has been a pioneer in English-language global education for children aged 1 to 6. Based on its educational philosophy of "Play-based Learning," the school offers a well-balanced curriculum that includes English and other language education and cultural experiences, as well as intellectual, physical, and emotional education in an international, yet a warm at-home environment with students from more than 20 different nationalities. We aim to nurture well-balanced human resources with a global mindset.



<https://summerhill.jp>

MUSASHI
INTERNATIONAL
SCHOOL TOKYO



Musashi International School Tokyo (MIST) was founded in 2002 in Mitaka, Tokyo, one of only four schools in Japan registered with Cambridge International from elementary through high school. The preschool curriculum for ages 3-5 is based on the Early Years Foundation Stage, and in 100% English language with a combination of play-based and academic curriculum. We are committed to providing a high quality international education at a reasonable tuition rate and developing students into motivated, lifelong learners.



<https://mist.school>

The ability to create a prosperous life
in a global society

We, the Aoba-Japan International School Group, are passionate about educating our students to become active global citizens and self-motivated individuals. Today, with the spread of the Internet and IOT, we are entering an era in which we can connect with the world from anywhere. Such a society will increasingly demand communication skills, including English, as well as a sense of internationalism and empathy that embraces diversity, the ability to think logically, and leadership skills. We believe that it is important for children to acquire these skills in a natural way over a prolonged period of time, from the age of 1 to 18. For this reason, we have introduced the International Baccalaureate curriculum, one of the world's standards in education, to all of our campuses, and provide it in a bilingual environment (Japanese and English). On the other hand, as an educational institution that takes care of our valuable students, we operate our school with safety and security as our top priority in all aspects of childcare, intellectual education, dietary education, and physical education so that parents can leave their children in our care knowing that they are safe with us. 20 years from now, your child will be the star of the future that we are raising him or her to be. We will continue to develop and improve the quality of our education by always looking 20 years ahead and considering what will be needed in society 20 years from now.

Message

President,
Aoba-Japan Bilingual Preschool

Iwao Shibata

MSc in Engineering from Kyoto University, MSc from London School of Economics, and MBA from Kellogg Graduate School of Management. Representative Director and President of Aoba-BBT, Inc. and K.K. Aoba International Educational Systems.

At AOBA Group, which introduces the International
Baccalaureate (IB), students can receive an integrated
IB education up to the age of entering university.



AOBA group (managed by K.K. Aoba International Educational Systems) has a total of 11 international schools and bilingual preschools in Tokyo. Of those 9 schools are officially accredited by the International Baccalaureate (IB)*, proudly the largest number in Japan. AOBA group is accredited by the International Baccalaureate (IB) to offer PYP, MYP, and DP. We also offer an integrated IB education, starting from the age of one, including an unlicensed childcare facility, up to the age of entering university. In addition, Aoba-Japan International School (A-JIS) is accredited by CIS*, allowing students to go on to not only universities overseas but also universities in Japan.



*1 International Baccalaureate World School <https://www.ibo.org/become-an-ib-school/> *2 <https://www.cis.org>



AOBA-JAPAN BILINGUAL PRESCHOOL

Our Accredited Schools with the International Baccalaureate Primary Years Programme (PYP)



Harumi Campus

Address: Harumi Triton Square 2F,
1-8-2 Harumi, Chuo-ku,
Tokyo 104-0053, Japan
TEL: 03-6228-1811
For students aged 1-5
School Hours: 7:30-19:30



Waseda Campus

Address: Chiyoda Bldg. 2,
1-14-8 Takadanobaba, Shinjuku-ku,
Tokyo 169-0075, Japan
TEL: 03-6385-2818
For students aged 1-5
School Hours: 8:00-18:00



Mitaka Campus

Address: 4-15-41 Shimorenjaku,
Mitaka-shi, Tokyo 181-0013, Japan
TEL: 0422-29-8977
For students aged 1-5
School Hours: 7:30-18:30



Nakano Campus

Address: Imas Nakano Minamidai 2F
(CRYSTAL COURT 88), 3-6-17 Minamidai,
Nakano-ku, Tokyo 164-0014, Japan
TEL: 03-6380-3218
For students aged 1-5
School Hours: 8:10-18:00



Shimomeguro Campus

Address: 5-29-6 Shimomeguro,
Meguro-ku, Tokyo 153-0064, Japan
TEL: 03-5734-1640
For students aged 2-5
School Hours: 8:10-18:30



Our Candidate School with the IB PYP

Yoga Campus

Address: COLLINE Baji Koen Building
A-3F,
2-4-18, Kamiyoga, Setagaya-ku,
Tokyo 158-0098, Japan
TEL: 03-6413-6150
For students aged 1-5
School Hours: 8:10-18:30



International Baccalaureate® (IB) Primary Years Programme (PYP) Candidate School

Aoba-Japan Bilingual Preschool Yoga Campus is a candidate school* for the PYP. This school is pursuing authorization as an IB World School. IB World Schools share a common philosophy- a commitment to high-quality, challenging, international education- that we believe is important for our students. * Only schools authorized by the IB Organization can offer any of its four academic programmes: the Primary Years Programme (PYP), the Middle Years Programme (MYP), the Diploma Programme (DP), or the Career-related Programme (CP). Candidate status gives no guarantee that authorization will be granted. For further information about the IB and its programmes visit <http://www.ibo.org>

Aoba Group



Aoba-Japan International School (A-JIS)

Accredited by the International Baccalaureate
(PYP, MYP, DP) / CIS, NEASC
Age range: 1.5 years old to 3rd year of high school



Summerhill International School

Accredited by the International
Baccalaureate (PYP)
Age range: 1.5 to 6 years old



Musashi International School Tokyo (MIST)

Accredited by Cambridge International
Age range: 2 years old to 3rd year of high school

Affiliated Organization



COUNCIL OF INTERNATIONAL SCHOOL

Aoba-Japan International School (A-JIS) is
accredited by CIS.



Tokyo Association of International Preschools

AOBA Group schools are registered
members of TaiP.

Managed by K.K. Aoba International Educational Systems

School hours include extended childcare hours. Please contact each campus for further details.

<https://aoba-bilingual.jp/en/>

